



Technology to care from anywhere

Cherry Home is an intelligent device which can help people with Parkinson's, dementia, stroke, and other common conditions to age safely in place.

www.cherryhome.ai | (866) 842-3779



Independent living free of the usual limitations of elderly care products.



No need to remember to wear anything in order to stay safe.



No need to press anything in the event of an emergency.



No need to charge batteries and manage the device.

	Cherry Home	Camera
Detection of dangerous events	Very sensitive	No
Anomalies in behavior that may lead to dangerous events	Yes	No
Activity monitoring	Daily reports	Only manual
Requires action from the patient in case of emergency	No	No
Privacy	Yes +	No
Looks medical or institutional	No	Sometimes

Cherry's AI monitors movement and interprets behavior to provide new insights.



Is everything okay here?
Seems like Ellen
possibly fell.



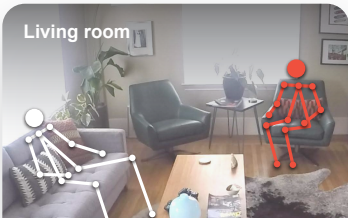
This is unusual for Ellen.
Attention might be
required.

Falls

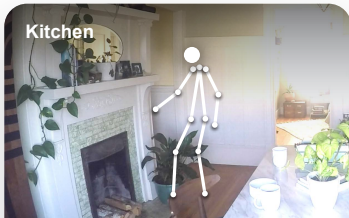
Never miss an emergency event.

Deviations in behavior

Immediately know a change in the senior's behavior and take action.



Caregiver spent three
hours at Ellen's.



Seems like Ellen left
home alone at 4:34 PM.

Visitors and service providers

Know who comes to the house and how long they stay.

Going out

Know when the senior leaves and returns home.



Coughing at least 28
times between 07:58 PM,
and 02:06 AM.

Coughs, snores and other sounds

Become aware of certain symptoms and track how their change over time.

Cherry provides daily reports that give insight into the overall well-being of a loved one.

- Caregiver spent time with Ellen from 1:00 PM till 7:00 PM.
- Laurie came from 1:30 PM till 5:50 PM.
- Ellen ate 3 times at 9:10 AM, 3:05 PM and 5:50 PM.
- Today we noticed that Ellen coughed at least 9 times between 7:15 PM and 3:47 PM, which is 5 times more than yesterday.

● **Day and night summaries**

Get a quick summary of how your loved one spent their day or slept in the night.

Cherry respects, and doesn't invade, personal territory.

- Private by default, with an option to switch to regular video.
- Private Mode allows to view real actions virtually through "stick" figures.
- Sensors in Private Mode can be installed in bedrooms and bathrooms where most accidents happen.



Cherry keeps data secure.

- The home unit processes everything on site, which means videos never leave the house.
- Cherry is a set of on-the-wall sensors and a home-based processing unit.